

CRASTATM

AdoreTech



Chromosome Analysis Skill Training Applications



Training for analysis of chromosome images

This is an application for help of a training to improve an essential skill of analysis of chromosome images based on large databases at the clinical situation. You can make your own schedule for the training.

Patent No. 4996711

Example window of CRASTA

- Full sets of chromosome images for a training are displayed within a upper half zone of the window.
- Initial position and orientation of the chromosome images are randomly set every time when you test, by a shuffle.
- A trainee can try finding a right cell in the lower half zone in the window to a corresponding chromosome image in a random order.
- When you finish to allocate all of the chromosome images, you can ask a right answer and a time you spent for the allocation.

A trainee can rotate and slide each chromosome image on the screen by using a mouse pointer and button.

A magnified view



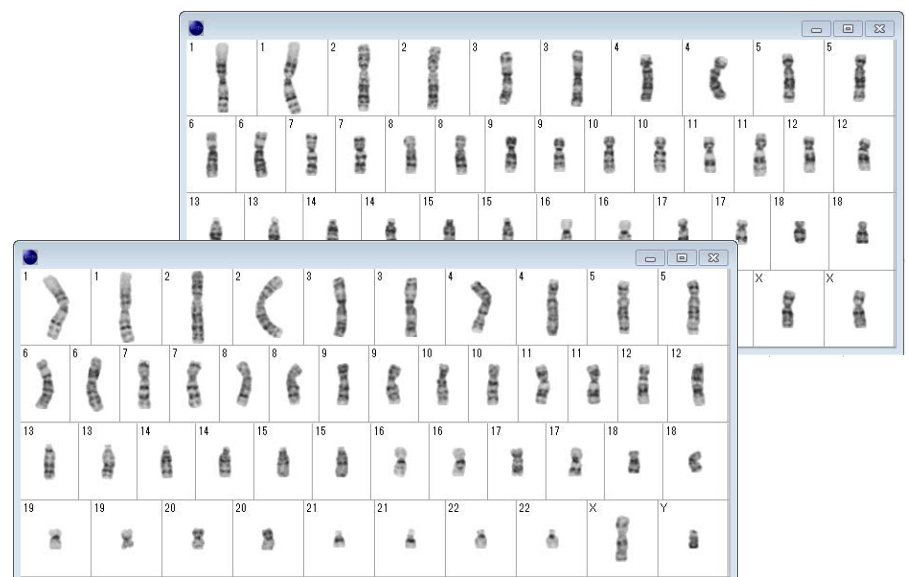
Zone for chromosomes to be allocated

Zone for the allocation

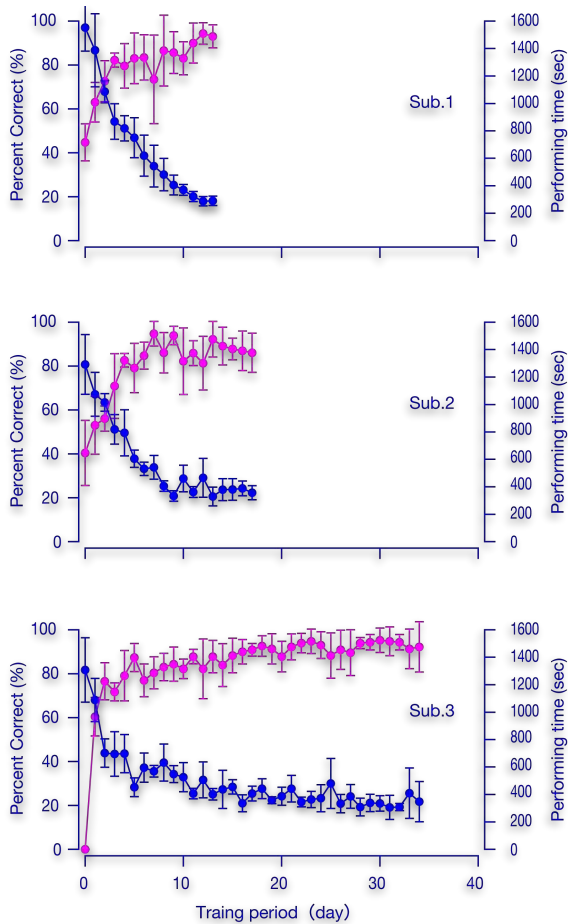
Examples of anomalous chromosomes^{*a}

- Ph1 positive chronic myelocytic leukemia
- Ph1 positive acute lymphoblastic leukemia
- t(8;21) translocation associated with acute myeloid leukemia (AML M2)
- t(15;17) translocation associated with acute promyelocytic leukemia (APL;AML M3)
- 11q23 rearranged leukemia

*a: this option is not included in the basic package



Example output images after an allocation of chromosome images in the CRASTA

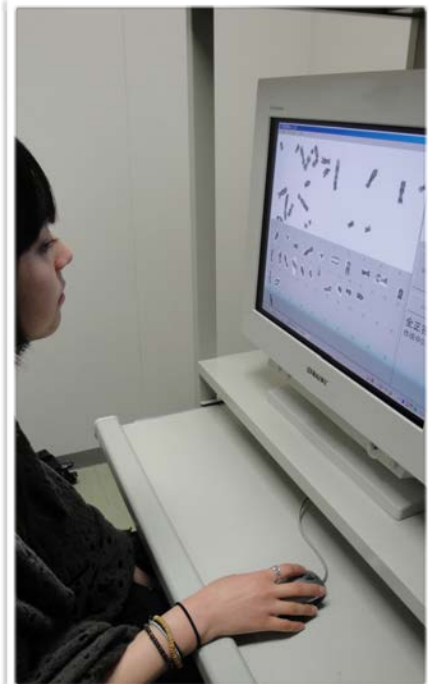


Great performance of training using CRASTA for trainees

After 35 days training (5 times in a day), all the trainees can reach better than 80% correction within a five minutes.

Proofed performance

- This application was verified its performance in terms of improving a skill of the chromosome image analysis by Prof. Kogi and its colleagues, Kanazawa Institute of Technology. Technical meetings of the Institute of Image Information and Television Engineers (2010) and (2014).



Basic Package License

Individual License (1 named personal)

including

- Training software, CRASTA
- 50 samples of chromosome images produced from normal humans*1
- Free technical support for 30 days*2

Group License (5~ individuals)

including

- Training software, CRASTA
- 50 samples of chromosome images produced from normal humans*1
- Free technical support for 30 days*2

Custom made Package License

This license gives customers services accomplishing their requests.

*1: 25 image sets. Each of 46 chromosomes for normal karyotype male and female.

*2: Free Technical supports cover issues on installation, the usage of the application and system requirements for the CRASTA for 30 days as from a purchase.

Our customers

(last 10 years)

Professor Mitsuo Oshimura, Chromosome Engineering Research Center, Tottori University 2010

“E-learning education system to improve chromosome analysis skill for the local community and university students” under Center of Community Program by MEXT, Kanazawa Institute of Technology 2014

MEMO

お問い合わせ
アドアテック株式会社
技術営業部

〒150-0043 東京都渋谷区道玄坂1-15-3
プリメーラ道玄坂416
TEL : 03-4530-8682

E-mail:info@adoretech.jp
URL:<http://www.adoretech.jp/>